

Description

The **GEMÜ CFSTF** service tool is used for correct assembly of flare union nuts in PFA, CPFA and PVDF. A precisely defined torque can be achieved when using it in combination with a torque wrench. The tool is made of PVDF.

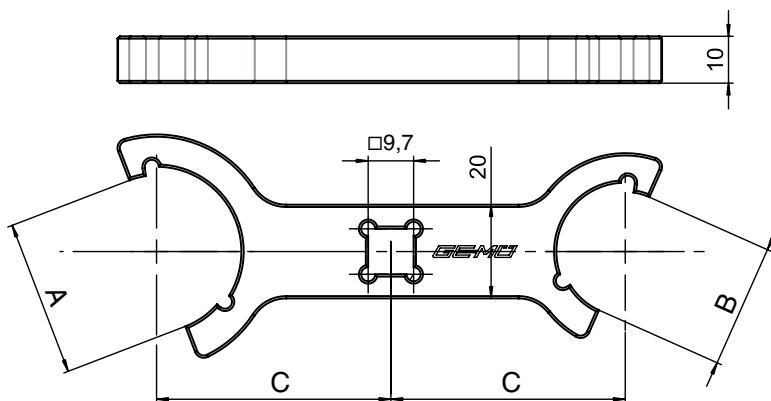
Advantages

- GEMÜ CFSTF is available for all nominal sizes of union nuts
- Handling in a restricted space
- High chemical and thermal resistance

Dimensions GEMÜ CFSTF [mm]

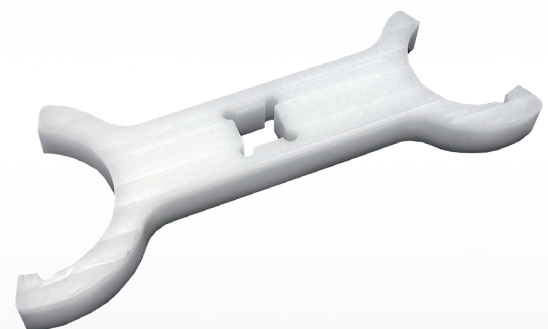
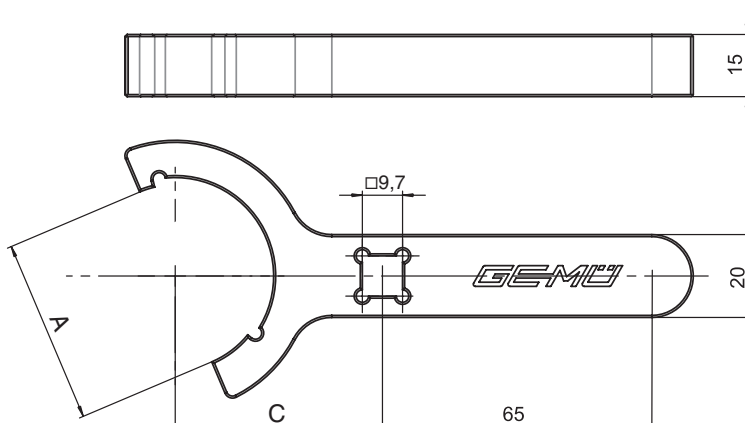
Size 1 (1/4" - 3/8") / Size 2 (1/2" - 3/4")

DN	Tube size	A	B	C
4 - 6	1/4" - 3/8"	22.88	19.2	50.0
10 - 15	1/2" - 3/4"	33.35	26.4	50.0



Size 3 (1") / Size 4 (1 1/4")

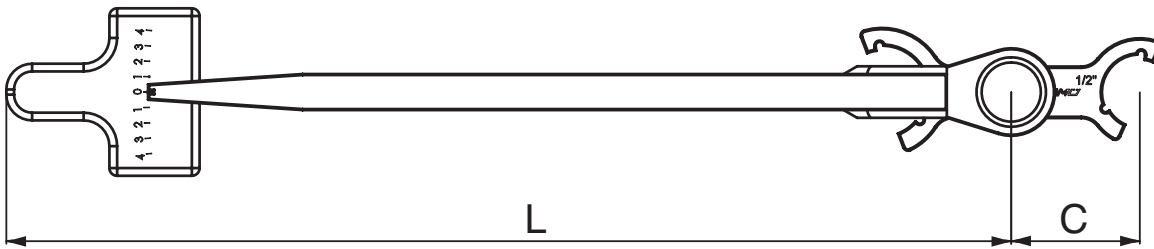
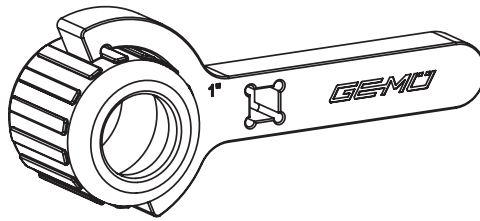
DN	Tube size	A	C
20	1"	44.5	50.0
25	1 1/4"	56.0	50.0



Order data

DN	Tube size	Type	Articel number
4 - 6	1/4" - 3/8"	CFSTF46 HP	88297751
10 - 15	1/2" - 3/4"	CFSTF812 HP	88297752
20	1"	CFSTF16 HP	88297754
25	1 1/4"	CFSTF20 HP	88297756

Application



Calculation of torque wrench setting:

M_1 = Setting of torque wrench

L = Length of torque wrench

M_2^* = Desired torque

C = Extension (dimensions on page 1)

$$M_1 = M_2^* \times \frac{L}{L + C}$$

Example for 1/2" union nut:

$$\text{Setting of indicator} = 1.24 \text{ Nm} \times \frac{0.29 \text{ m}}{0.29 \text{ m} + 0.05 \text{ m}}$$

$$\text{i.e.: } M_1 = \underline{1.22 \text{ Nm}}$$

Note: The service tool in combination with a torque wrench must always be used as illustrated above.

* For torques please refer to our -Flaren- assembly instructionc.

For further High purity products, accessories and other products, please see our
Product Range catalogue and Price List. Contact GEMÜ.

GEMÜ® VALVES, MEASUREMENT
AND CONTROL SYSTEMS

