

# GEMÜ 1041 Compensating / Mounting plate

for GEMÜ plastic diaphragm valves, DN 12 - 50

for GEMÜ 600, 667, 677, 690, 693, R629, R639, R647, R649, R677 und R690

## Version 05 (88058183) - compensating plate, PP (glass fibre reinforced)

A mounting plate to raise the valve body so unions do not foul mounting surfaces. Compensating plate for DN 15 - 32 so they align with the pipe centres of the DN 32 - 50 bodies (when these are directly mounted without a compensating plate). Order code 1041 000 Z05

## Version 06 (88058184) - compensating plate, PP (glass fibre reinforced)

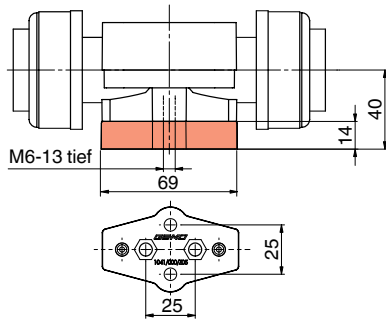
Compensating plate for DN 15 - 25 so they align with the pipe centres of the DN 32 - 50 bodies (when these are equipped with compensating plate GEMÜ 1041 000 Z07). Order code 1041 000 Z06

## Version 07 (88058185) - compensating plate, PP (glass fibre reinforced)

A mounting plate to raise the valve body so unions do not foul mounting surfaces. Compensating plate for DN 32 - 50 so they align with the pipe centres of the DN 15 - 32 bodies (when these are equipped with compensating plate GEMÜ 1041 000 Z06). Order code 1041 000 Z07

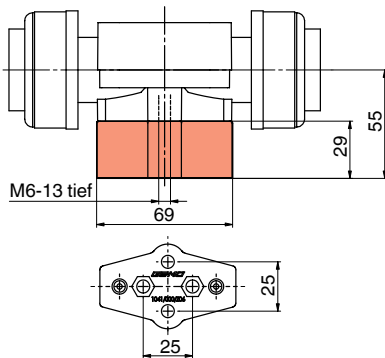


### Dimensions 05 [mm]



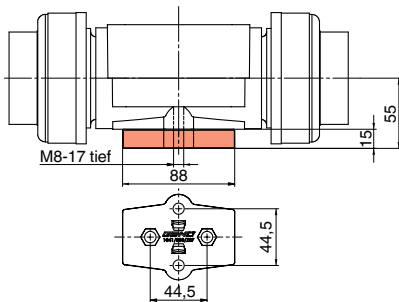
GEMÜ 600, 667, 677, 690 and 693	DN 15 - 25	DN 32 - 50
GEMÜ R647	DN 15 - 32	DN 40 - 50
GEMÜ R629, R639, R649, R677, R690	DN 15 - 32	DN 40 - 65

### Dimensions 06 [mm]



GEMÜ 600, 667, 677, 690 and 693	DN 15 - 25	DN 32 - 50
GEMÜ R647	DN 15 - 32	DN 40 - 50
GEMÜ R629, R639, R649, R677, R690	DN 15 - 32	DN 40 - 65

### Dimensions 07 [mm]



GEMÜ 600, 667, 677, 690 and 693	DN 15 - 25	DN 32 - 50
GEMÜ R647	DN 15 - 32	DN 40 - 50
GEMÜ R629, R639, R649, R677, R690	DN 15 - 32	DN 40 - 65

---

**GEMÜ 1041 000 Z02 - mounting plate, PP (glass fibre reinforced)**

Mounting plate for DN 12 and 15. Order code 1041 000 Z02



**GEMÜ 1041 000 Z03 - mounting plate, PP (glass fibre reinforced)**

A mounting plate to raise the valve body so unions do not foul mounting surfaces. Compensating plate for DN 15 - 25 so they align with the pipe centres of the DN 32 - 50 bodies (when these are directly mounted without mounting plate). Order code 1041 000 Z03



**Version 08 (88069020) - mounting plate, PVDF**

Mounting plate for GEMÜ 610 and 617, DN 15, MG 10



**Version 09 (88069012) - mounting plate, PVDF**

Mounting plate for GEMÜ 610 and 617 for Connection code 1

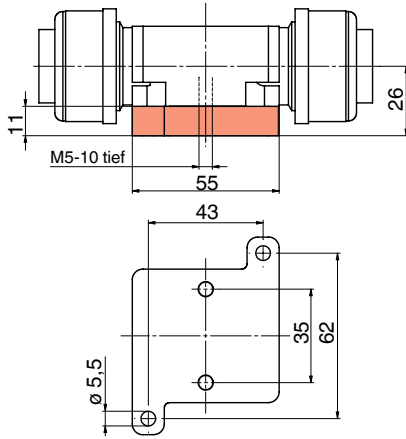


**Version 10 (88541092) - mounting plate, PVDF**

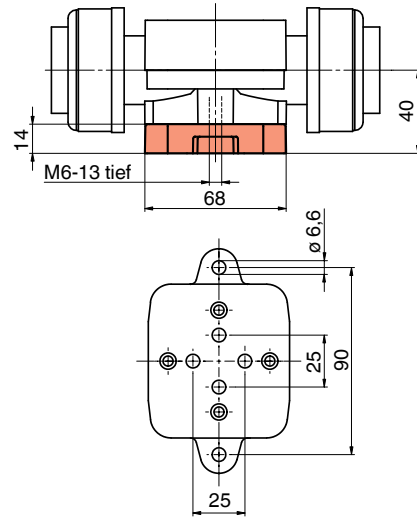
Mounting plate for GEMÜ R629, R639, DN15, MG10



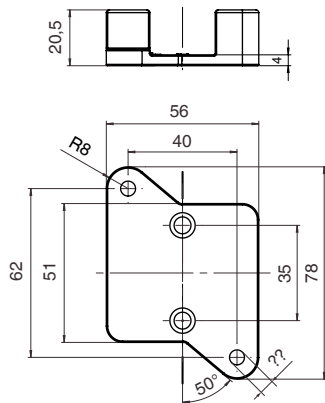
**Dimensions 02 [mm]**



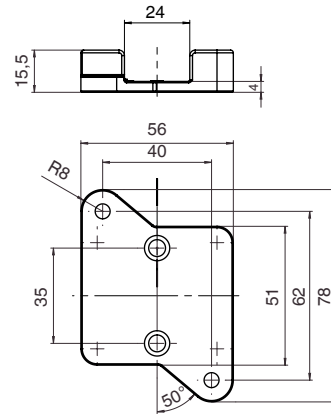
**Dimensions 03 [mm]**



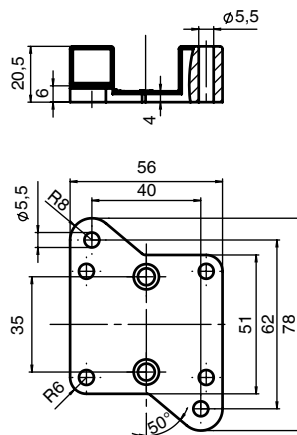
**Dimensions 08 [mm]**



**Dimensions 09 [mm]**



**Dimensions 10 [mm]**



For further accessories and other products, please see our Product Range catalogue and Price list. Contact GEMÜ.